



---

Shyam Indus Power Solutions Pvt. Ltd

June 2014

# Index

1. Company Overview
2. Power Sector Overview
3. Vision ,Mission & Values
4. Strength
5. Growth Plans
6. Financial Information

## Introduction

- Promoted by **Capt.(Retd.) R.S. Sindhu & Maj. (Retd.) Satya pal Sindhu**
- ISO 9001:2008 certified - Project engineering, Procurement and Construction Company.
- Provides end-to-end solutions in Electricity Transmission & Distribution.
- Established in 2004, head office situated at India's capital, New Delhi.
- Projects across Delhi, Haryana, Punjab, Himachal Pradesh, Uttar Pradesh , Madhya Pradesh, Chhattisgarh, Kerala and developing new projects in Rajasthan, Gujarat and Odhisa.

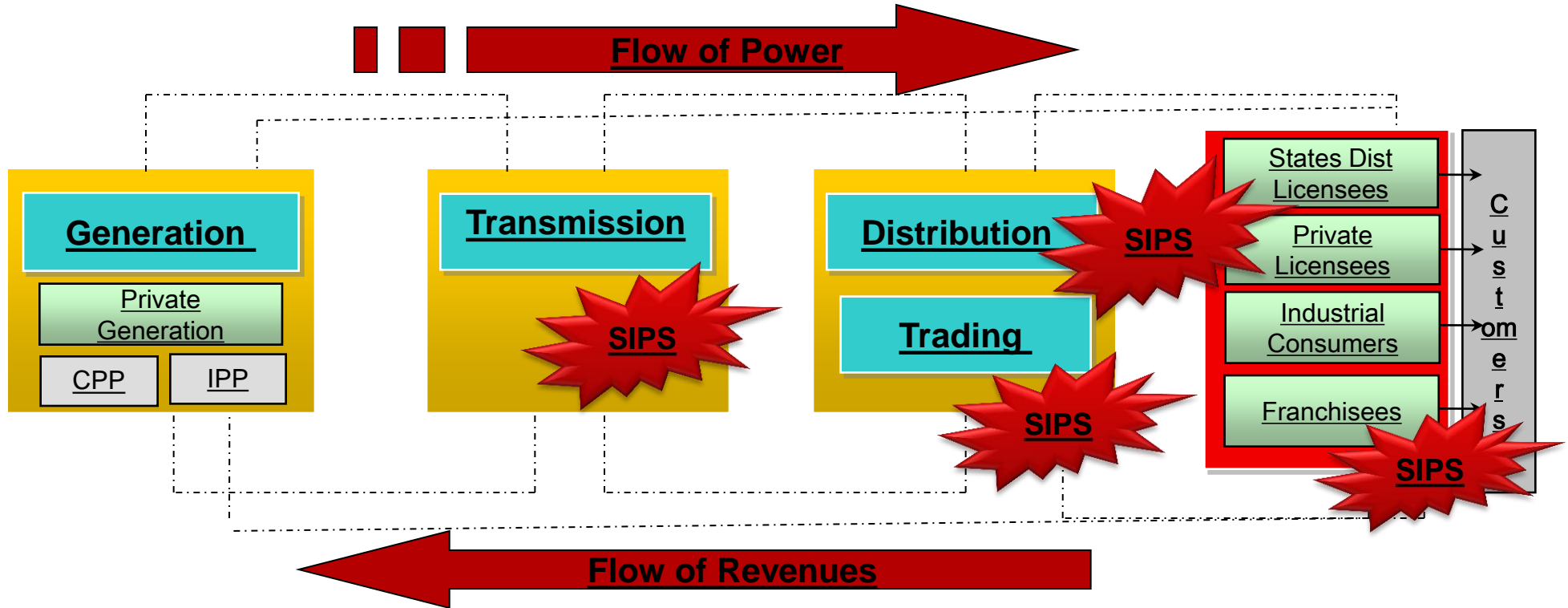
## Distribution & Transmission Turnkey Projects & Distribution Franchisee

Projects	Clients
<p>•HVDS T/W Connections, Feeder Separation Program, DT, HT &amp; LT Line, BPL Service connections, Augmentation of 33/11 kV substation, 33 kV HT line, 33/11 kV Unmanned Substation, 33/11 kV GIS Substation, 33 kV DC HT Line, LT/HT Aerial Bunched cabling and HT/LT underground cabling works on Turnkey Basis.</p>	<p>Punjab State Electricity Board, Uttar Haryana Bijli Vitran Nigam Ltd., M. P. Paschim Kshetra Vidyut Vitran Nigam Ltd, Himachal Pradesh State Electricity Board Ltd, Paschimanchal Vidyut Vitran Nigam Ltd., Uttar Haryana Bijli Vitran Nigam Ltd., Dakshin Haryana Bijli Vitran Nigam Ltd., Vijai Electricals, Spectrum Coal Pvt. Ltd., M. P. Madhya Kshetra Vidyut Vitran Nigam Ltd. TPDDL, Chhattisgarh State Power Distribution Company Limited, Areva.</p>
<p>•66kV/132kV/220kV/ 400kV substations &amp; line works on Turnkey Basis.</p>	<p>Siemens, Haryana Vidyut Prasaran Nigam Limited (Haryana), ABB, TRN Energy Limited, Maruti Clean Coal &amp; Power Limited, ACB (INDIA) Limited</p>
<p>Type – Input Unit Based Franchisee for reduction AT&amp;C losses up to 15% in five year.</p>	<p>CESU, Bhubaneswar</p>

# Railway Turnkey Projects

Projects	Clients
•25KV Single Phase OHE Work (33 TKM)	Northern Railway, Shajapur to ROSA Thermal Power Plant
•25kv Single Phase OHE Work (370 TKM)	Central Organization of Railway Electrification, Kannur (Incl) – Mangalore (Incl) – Panambur (Incl) section Gr.158
•25kv Single Phase OHE Work (213 TKM)	Central Organization of Railway Electrification, Sitapur) – Burhwal(Excl.) section Gr.164 (Mod)
•25kv Single Phase OHE Work (216 TKM)	Central Organization of Railway Electrification, Chheoki) – Manikpur(Excl.) section Gr.173A

# Indian Power Sector Overview



# Our Vision, Mission & Values





### **Vision:**

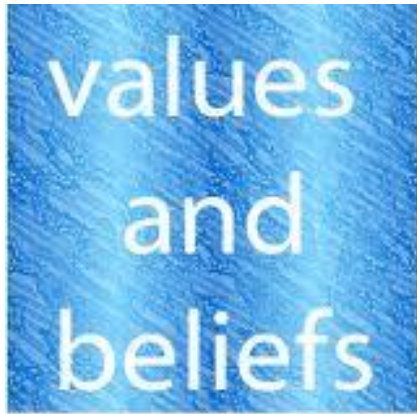
To be an admired company in power distribution, engineering and project management, partnering in nation's growth.

### **Mission:**

- ◆ Focussed and innovative customer services
- ◆ Achieving excellence in delivery of services by creating benchmarks in safety and quality
- ◆ Enriching culture of cooperative growth through teamwork
- ◆ Strive to conserve natural resources for benefit of mankind
- ◆ Creating value for stakeholders through strong business results

### **Values:**

- ◆ Trust and Belief in each other
- ◆ Integrity – Honesty, Fairness and Transparency in our Conduct and Transactions
- ◆ Initiatives supported by able Processes
- ◆ Responsible Corporate Citizenship
- ◆ Quality for Customer Delight
- ◆ Happiness at Work





# Strengths

**1**

**Strong Industry Dynamics**

**2**

**Leadership in Establishing Distribution Networks in Haryana, Punjab & Himachal Pradesh**

**3**

**Time Bound Deliverables**

**4**

**Experienced and stable management team**

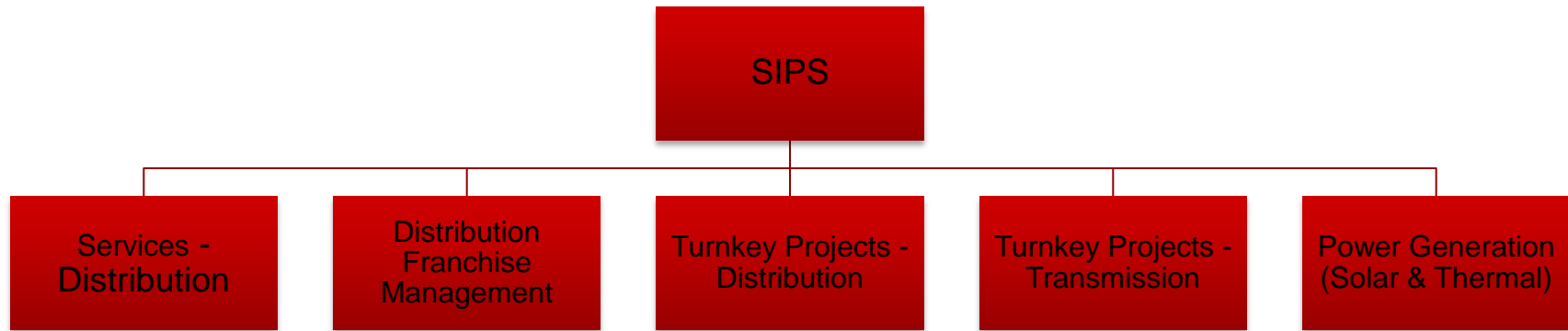
**5**

**Demonstrated growth & execution capabilities**

## Growth Plans

# Future Business Growth

- SIPS plans to diversify in the power and infrastructure space as shown below:



## Business Division

## Initiatives

Power Generation – Solar and Thermal

- 10 MW solar power plant under implementation, 50 MW in pipeline
- 500+ MW thermal project in pipe-line

# SIPS Projects

## Thermal

- 500 MW project being developed in Chhattisgarh
- Expected Commercial Operation Date (COD) - 2015



## Solar

- Around 50 MW solar PV projects under development in Chhattisgarh and Madhya Pradesh



## Biomass

- Around 40 MW of biomass based projects under development in Madhya Pradesh



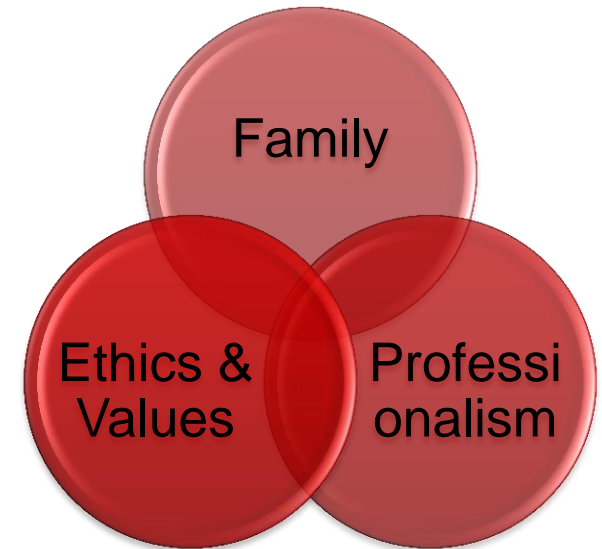
## Financial Overview

# Financial snapshot-Consol level

	Financial Data for last 5 Years (In Rs,In Mn)				
	2009-10	2010-11	2011-12	2012-13	2013-14
<b>Total Assets</b>	1236.422	1437.624	2311.322	2769.334	32725.81
<b>Total Liabilities</b>	1236.422	1437.624	2311.322	2769.334	13089.63
<b>Net Worth</b>	304.867	353.904	965.37	1007.697	11506.90
<b>Current Assets</b>	1195.568	1388.44	2169.282	2565.174	30786.02
<b>Current Liabilities</b>	205.267	277.674	1278.265	1580.156	8122.70
<b>Total Revenues</b>	1860.721	1965.852	2169.937	2461.66	30012.56
<b>Profits Before Taxes</b>	96.683	73.413	98.442	62.593	723.21
<b>Profits After Taxes</b>	63.28	49.037	69.464	42.328	502.90
<b>Turnover</b>	1860.7	1965.8	2169.9	2461.6	30012.56

# Our Culture

- We are One Big Family
  - ◆ Everyone is a part of the SIPS family
  - ◆ We share all the happiness and sorrows
  - ◆ We work together, we care for each other
- Professional
  - ◆ Customer always comes first
  - ◆ Quality in everything we do
  - ◆ We follow timelines
- Ethical
  - ◆ Honesty, truthfulness forms the integral part of daily working and living



Thank You